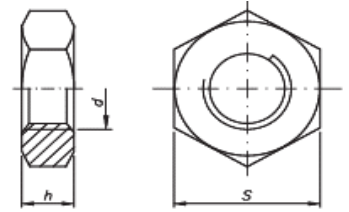


## PORCA SEXTAVADA BAIXA

ROSCA: Din 13 (ISO 965)



Din 439			
d Diâmetro	rosca/passo	h (altura)	s (chave)
		Nom.	Máx.
M4	MA-0,70	2,20	7
M5	MA-0,80	2,70	8
M6	MA-1,00	3,20	10
M8	MA-1,25	4,00	13
M10	MA-1,50	5,00	17
M12	MA-1,75	6,00	19
M16	MA-2,00	8,00	24
M20	MA-2,50	10,00	30
M24	MA-3,00	12,00	36

ROSCA: UNC - ASME B1.1

ANSI B18.2.2			
d Diâmetro	rosca/FPP	h (altura)	s (chave)
		Nom.	Máx.
3/16	UNC-24	1/8	3/8
1/4	UNC-20	5/32	7/16
5/16	UNC-18	3/16	1/2
3/8	UNC-16	7/32	9/16
7/16	UNC-14	1/4	5/8
1/2	UNC-13	5/16	3/4
1/2	BSW-12	5/16	3/4
5/8	UNC-11	3/8	15/16
3/4	UNC-10	7/16	1-1/8