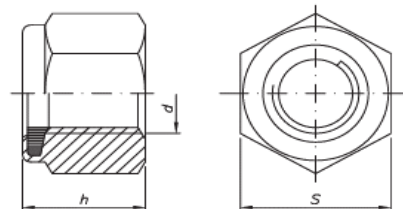


PORCA TRAVANTE ALTA COM NYLON

ROSCA: UNC / UNF / UNS - ASME B1.1 • BSW - Din 11



IFI 100 (ASME B18.16.6)

d Diâmetro	rosca/FPP		h (altura)		s (chave) Máx.	
			Máx.	pol	mm	
#4	UNC-40		3,88	1/4	6,35	
#5	UNC-40		3,88	1/4	6,35	
#6	UNC-32		4,77	5/16	7,93	
#8	UNC-32		6,07	11/32	8,73	
#10	UNC-24	UNF-32	6,32	3/8	9,52	
1/4	UNC-20	UNF-28	8,33	7/16	11,11	
5/16	UNC-18	UNF-24	9,11	1/2	12,70	
3/8	UNC-16	UNF-24	11,88	9/16	14,27	
7/16	UNC-14	UNF-20	11,88	5/8	15,87	
1/2	UNC-13	UNF-20	BSW-12	3/4	19,05	
9/16	UNC-12	UNF-18	16,66	7/8	22,22	
5/8	UNC-11	UNF-18	19,43	15/16	23,81	
3/4	UNC-10	UNF-16	22,6	1-1/16	26,98	
7/8	UNC-9	UNF-14	25,37	1-1/4	31,75	
1"	UNC-8	UNF-12	UNS-14	1-7/16	36,51	
1-1/8	UNC-7		30,55	1-5/8	41,27	
1-1/4	UNC-7		36,11	1-13/16	46,03	
1-1/2	UNC-6		41,65	2-3/16	55,56	

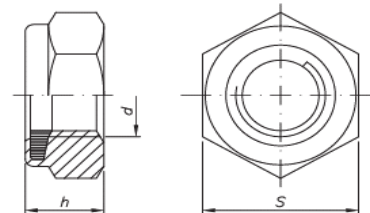
ROSCA: MA / MB - Din 13 (ISO 965)

Din 982 (Din EN ISO 10512)

d Diâmetro	rosca/passos		h (altura)	
			Nom.	Máx.
M3	MA-0,50	MB-0,35	4,00	5,5
M4	MA-0,70	MB-0,50	5,80	7
M5	MA-0,80	MB-0,50	6,30	8
M6	MA-1,00	MB-0,75	8,00	10
M8	MA-1,25	MB-1,25	9,50	13
M10	MA-1,50	MB-1,50	11,50	17
M12	MA-1,75	MB-1,50	14,00	19
M14	MA-2,00	MB-1,50	16,00	22
M16	MA-2,00	MB-1,50	18,00	24
M18	MA-2,50	MB-1,50	20,00	27
M20	MA-2,50	MB-1,50	22,00	30
M22	MA-2,50	MB-1,50	25,00	32
M24	MA-3,00	MB-2,00	28,00	36

PORCA TRAVANTE BAIXA COM NYLON

ROSCA: UNC / UNF / UNS - ASME B1.1 • BSW - Din 11



IFI 100 (ASME B18.16.6)

d Diâmetro	rosca/FPP		h (altura)		s (chave) Máx.	
			Máx.	pol	mm	
#10	UNC-24	UNF-32	4,34	3/8	9,52	
1/4	UNC-20	UNF-28	5,39	7/16	11,11	
5/16	UNC-18	UNF-24	6,55	1/2	12,70	
3/8	UNC-16	UNF-24	8,13	9/16	14,27	
7/16	UNC-14	UNF-20	9,27	5/8	15,87	
1/2	UNC-13	UNF-20	BSW-12	10,85	3/4	19,05
9/16	UNC-12	UNF-18	12,01	7/8	22,22	
5/8	UNC-11	UNF-18	13,59	15/16	23,81	
3/4	UNC-10	UNF-16	15,67	1-1/16	26,98	
7/8	UNC-9	UNF-14	18,39	1-1/4	31,75	
1"	UNC-8	UNF-12	UNS-14	21,10	1-7/16	36,51
1-1/4	UNC-7		26,16	1-13/16	46,03	
1-1/2	UNC-6		31,62	2-3/16	55,56	

ROSCA: MA / MB - Din 13 (ISO 965)

Din 985 (Din EN ISO 10511)

d Diâmetro	rosca/passos		h (altura)	
			Máx.	s (chave) Máx.
M3	MA-0,50	MB-0,35	4,00	5,5
M4	MA-0,70	MB-0,50	5,00	7
M5	MA-0,80	MB-0,50	5,00	8
M6	MA-1,00	MB-0,75	6,00	10
M8	MA-1,25	MB-1,00	8,00	13
M10	MA-1,50	MB-1,00	10,00	17
M12	MA-1,75	MB-1,50	12,00	19
M14	MA-2,00	MB-1,50	14,00	22
M16	MA-2,00	MB-1,50	16,00	24
M18	MA-2,50	MB-1,50	18,50	27
M20	MA-2,50	MB-1,50	20,00	30
M22	MA-2,50	MB-1,50	22,00	32
M24	MA-3,00	MB-2,00	24,00	36