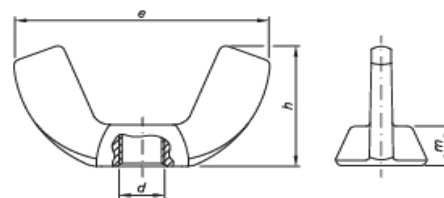


## PORCA BORBOLETA

ROSCA: UNC - ASME B1.1 • BSW - Din 11



Padrão Comercial				
d Diâmetro	rosca/FPP	m (alt do corpo)	e (largura)	h (altura total)
		Ref.	Ref.	Ref.
5/32	BSW-32	4,31	22,86	11,68
3/16	BSW-24	4,31	22,86	11,68
1/4	UNC-20	5,33	27,43	14,22
5/16	UNC-18	6,09	31,49	16,51
3/8	UNC-16	7,11	36,06	20,06
1/2	UNC-13	9,39	48,26	25,40
1/2	BSW-12	9,39	48,26	25,40

ROSCA: Din 13 (ISO 965)

Din 315				
d Diâmetro	rosca/passos	m (alt do corpo)	e (largura)	h (altura total)
		Ref.	Ref.	Ref.
M4	MA-0,70	4,31	22,86	11,68
M5	MA-0,80	4,31	22,86	11,68
M6	MA-1,00	5,33	27,43	14,22
M8	MA-1,25	6,09	31,49	16,51
M10	MA-1,50	7,11	36,06	20,06
M12	MA-1,75	8,63	47,49	25,40